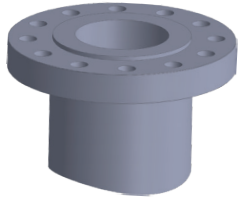


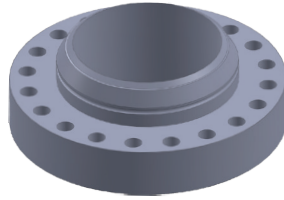


DL FLANGE

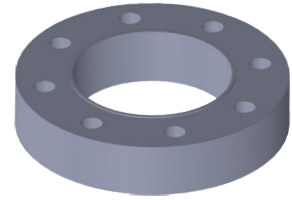
GROUPE **GENOYER**



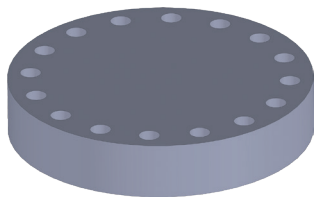
CONTOURED LWN



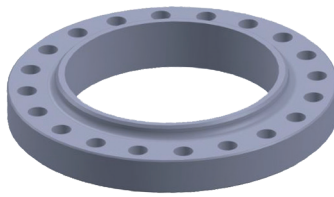
SWIVEL



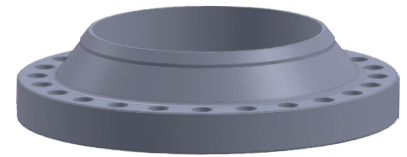
STUDDING OUTLET



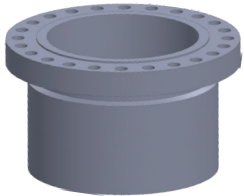
BLIND



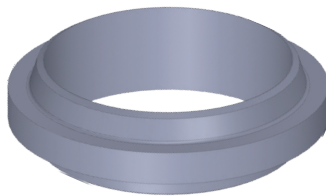
SLIP ON



WELDNECK



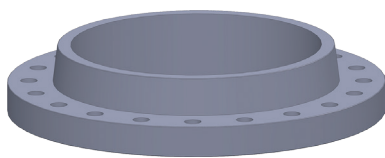
HEAVY BARREL



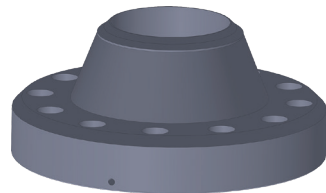
ANCHOR



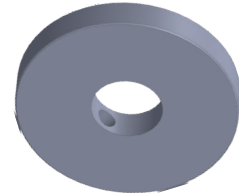
REDUCING WN



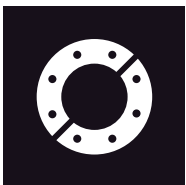
LAP JOINT



ORIFICE



BLEED RING



YOUR 24 HOUR FLANGE SOLUTION!

SERVICES

- Quick Turnaround
- Made to order / Custom Flanges
- Cladding (Overlay / Inlay)
- QR Code with MTRs accessible 24/7

STRONG POINTS

- Located in Houston, TX
- 40+ years in business
- On time delivery
- ISO 9001 : 2015
- Customer service
- Product traceability on MTR's
- Destructive testing on each heat

FLANGE WEIGHTS BY PRESSURE CLASS AND SIZE

Nom. Pipe Size	150# Approx. Weight (lbs.)		300# Approx. Weight (lbs.)		600# Approx. Weight (lbs.)		900# Approx. Weight (lbs.)		1500# Approx. Weight (lbs.)		2500# Approx. Weight (lbs.)			
	Weld Neck	Blind	Weld Neck	Blind	Weld Neck	Blind	Weld Neck	Blind	Weld Neck	Blind	Weld Neck	Blind		
60	2353 (A) 850 (B)	6155 (A) 3913 (B)	2470 (A) 2870 (B)	7274 (A) 7980 (B)	5000 (A & B)	13108 (A & B)	NO PUBLISHED DIMENSIONS		NO PUBLISHED DIMENSIONS		NO PUBLISHED DIMENSIONS			
58	1915 (A) 780 (B)	5675 (A) 3560 (B)	2270 (A) 2770 (B)	6669 (A) 7347 (B)	4640 (A & B)	11414 (A & B)								
56	1760 (A) 650 (B)	5130 (A) 3145 (B)	2155 (A) 2595 (B)	6099 (A) 6642 (B)	4280 (A & B)	10530 (A & B)								
54	1585 (A) 620 (B)	4639 (A) 2848 (B)	2050 (A) 1980 (B)	5684 (A) 5679 (B)	3920 (A & B)	9333 (A & B)								
52	1410 (A) 520 (B)	4156 (A) 2547 (B)	1660 (A) 1840 (B)	4906 (A) 5096 (B)	3560 (A & B)	8425 (A & B)								
50	1270 (A) 520 (B)	3716 (A) 2284 (B)	1530 (A) 1710 (B)	4442 (A) 4629 (B)	3330 (A & B)	7695 (A & B)								
48	1185 (A) 480 (B)	3350 (A) 2045 (B)	1380 (A) 1575 (B)	3896 (A) 4183 (B)	2855 (A & B)	6737 (A & B)							4980 (A & B)	11398 (A & B)
46	1060 (A) 435 (B)	2961 (A) 1825 (B)	1235 (A) 1470 (B)	3500 (A) 3766 (B)	2410 (A & B)	5758 (A & B)							4640 (A & B)	10426 (A & B)
44	990 (A) 310 (B)	2715 (A) 1579 (B)	1055 (A) 1235 (B)	3079 (A) 3305 (B)	2160 (A & B)	5105 (A & B)							4300 (A & B)	8955 (A & B)
42	890 (A) 345 (B)	2380 (A) 1393 (B)	950 (A) 1135 (B)	2689 (A) 2875 (B)	2030 (A & B)	4585 (A & B)							3960 (A & B)	7675 (A & B)
40	775 (A) 310 (B)	2040 (A) 1247 (B)	840 (A) 990 (B)	2380 (A) 2550 (B)	1630 (A & B)	3838 (A & B)							3620 (A & B)	6940 (A & B)
38	720 (A) 290 (B)	1819 (A) 1090 (B)	695 (A) 915 (B)	2001 (A) 2257 (B)	1470 (A & B)	3405 (A & B)							3385 (A & B)	6253 (A & B)
36	640 (A) 240 (B)	1676 (A) 890 (B)	1275 (A) 840 (B)	2435 (A) 1920 (B)	1705 (A) 1340 (B)	3800 (A) 3013 (B)							3395 (A) 2520 (B)	6210 (A) 4963 (B)
34	540 (A) 210 (B)	1384 (A) 782 (B)	1145 (A) 750 (B)	2068 (A) 1719 (B)	1540 (A) 1205 (B)	3237 (A) 2645 (B)							2970 (A) 2450 (B)	5425 (A) 4575 (B)
32	505 (A) 170 (B)	1238 (A) 648 (B)	1005 (A) 685 (B)	1795 (A) 1556 (B)	1375 (A) 950 (B)	2858 (A) 2160 (B)	2545 (A) 2065 (B)	4541 (A) 3865 (B)						
30	400 (A) 150 (B)	982 (A) 545 (B)	870 (A) 550 (B)	1545 (A) 1250 (B)	1210 (A) 810 (B)	2423 (A) 1800 (B)	2120 (A) 1820 (B)	3759 (A) 3334 (B)						
28	345 (A) 140 (B)	833 (A) 455 (B)	745 (A) 450 (B)	1315 (A) 1023 (B)	1060 (A) 650 (B)	2061 (A) 1427 (B)	1810 (A) 1520 (B)	3178 (A) 2762 (B)						
26	300 (A) 120 (B)	702 (A) 375 (B)	605 (A) 400 (B)	1079 (A) 905 (B)	940 (A) 550 (B)	1760 (A) 1195 (B)	1525 (A) 1050 (B)	2565 (A) 2185 (B)						
24	260	430	580	790	830	1250	1500	2025	3325	3625				
22	225	355	465	640	720	1000	NO PUBLISHED DIMENSIONS							
20	180	285	400	505	590	810	830	1075	2050	2225				
18	150	220	320	395	475	630	680	850	1625	1750				
16	140	180	250	295	390	495	495	600	1250	1300				
14	110	140	180	250	280	355	400	520	940	975				
12	80	110	140	185	225	295	325	415	690	690	1525	1300		
10					190	230	260	290	455	510	1075	1025		
8					120	140	175	200	275	300	580	530		
6					81	86	110	115	165	160	380	345		
5					68	68	86	87	130	140	245	225		
4					42	41	53	54	73	73	145	135		
3					23	20	31	29	48	48	94	86		
2,5					18	15	36	35	36	35	52	56		
2					12	10	25	25	25	25	42	39		
1,5														
1,25														
1														
0,75														
0,5														

AML'S LIST:



+ more on our website

PRODUCTS STANDARDS:

- ▶ ASME-ANSI-B16.5 and B16.47 Series A & B / MSS SP44 / CSA and Industry Standards.
- ▶ API 6A Flanges 2,000#, 3,000#, 5,000#, 10,000#, 15,000#, per API specification without monogram

MATERIALS:

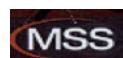
- ▶ Carbon Steel: ASTM A105, A350LF2, A694F42, A694F52, A694F60, A694F65, A694F70, A707L3CL3, A350LF6CL2

FOR QUICK-TURNAROUNDS AND SPECIALS:

- ▶ Stainless steel
- ▶ Duplex Steel / Super Duplex Steel
- ▶ Nickel Alloys
- ▶ Chrome
- ▶ Alloy

CERTIFICATIONS:

- ▶ ISO 9001:2015
- ▶ PED Certified
- ▶ CRN



DL FLANGE
7785 E. Little York Rd., Houston, TX 77016
Phone: (832) 397-4290 - Fax: (713) 635-4784 - After Hours: (713) 412-7233
sales@dlflange.com - www.dlflange.com

